

HF Series

Hoist Drive Units

Product Catalog



PRODUCTS &
SOLUTIONS





About Bonfiglioli India



We are a family-run Italian company with a global presence.

Our three business units, **Discrete Manufacturing & Process Industries, Motion & Robotics and Mobility & Wind Industries**, embody all the expertise and experience needed to support our customers' growth.

Our solutions are based on a wide range of products, including gearmotors, drive systems, planetary gearboxes and inverters.



MEET OUR
CUSTOMERS'
NEEDS



INDIAN
DISTRIBUTION
NETWORK



IMPROVE
APPLICATION
PERFORMANCE

Bonfiglioli Transmissions Pvt. Ltd. is the India-based subsidiary of Bonfiglioli Riduttori S.p.A. Set up in 1999, India was the first destination outside Italy, when the Group decided to expand globally. Bonfiglioli operates worldwide in 80+ countries, 20+ Branches, 14 Plants, with a wide network comprising 550+ distributors and over 3,800 employees.

Bonfiglioli India is the preferred partner or a partner of choice for industry leading original equipment manufacturers (OEMs) in India and a market leader in the wind and mobility sectors.

In India, we have three ultramodern manufacturing facilities in Chennai, Mannur and Pune equipped with cutting-edge assembly lines and a Global Research & Development Centre and testing laboratory – The India Design Center (IDC) to create breakthrough solutions that integrate the most advanced mechanical, electrical, and hydraulic technologies.

Our solutions are based on a wide range of products and serve different industries Bonfiglioli solutions impact all aspects of daily life, from the food we consume to the roads we drive on, the clothes we wear, and the light that illuminates our homes.

Bonfiglioli provides
solutions for:



DISCRETE
MANUFACTURING &
PROCESS INDUSTRIES



MOTION & ROBOTICS



MOBILE



WIND

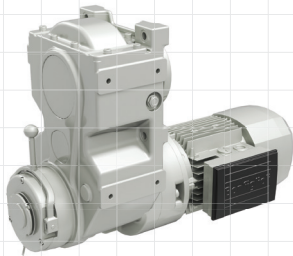


ELECTROMOBILITY

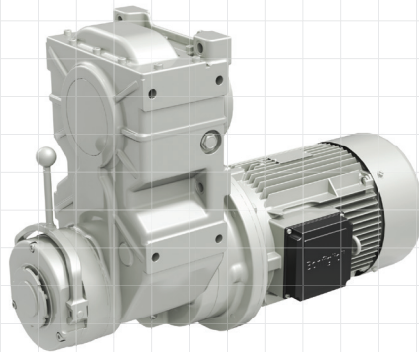
www.bonfiglioli.com



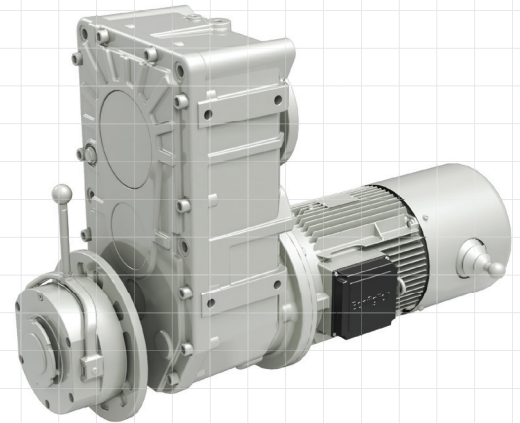
HF Series - Hoist Drive Units



HF40
Capacity upto 4 Tons



HF70
Capacity upto 7 Tons



HF125
Capacity upto 12.5 Tons

The new HF Series are the range of drive solutions dedicated for **Hoists application in material handling cranes**. The design of HF Series has been framed by our synergetic R&D team after performing **detailed data analysis of real operating** conditions and conducting several interactions with many Crane manufacturers to understand operating challenges faced by them to define needs for special design features which are incorporated in these products. The products are designed for higher FEM & ISO classes to have **higher safety, high reliability** and also ensuring higher performances with precise operation of hoists. Additionally, **the higher input to output offset and higher space between motor and drum installation** provide an advantage to the OEM's to **choose from a wide range of drum sizes** available in the market.

Salient Features & Benefits



Rugged structural design with high load carrying capacity

- High radial load carrying capacity which is the key requirement for Hoists / Cranes
- Products can withstand high impact loads during operation



Higher centre & offset distance

- Facilitates OEM's to select wide range Drum sizes & Motor frame size combinations
- Optimal space between the Drum & Motor facilitates access and ease of maintenance
- Higher Input Offset allows greater flexibility in rope Reeving



Wide range of output connections provides design flexibility for OEM's

- Solid output shaft
- Output with male spline
- Output with coupling connection



High performance Gears and Bearings

- Gear Profiles are optimized and designed for high power density and to satisfy wide range of FEM / ISO mechanism class
- Superior Bearings are selected to support higher loads and to satisfy wide range of FEM/ ISO mechanism class

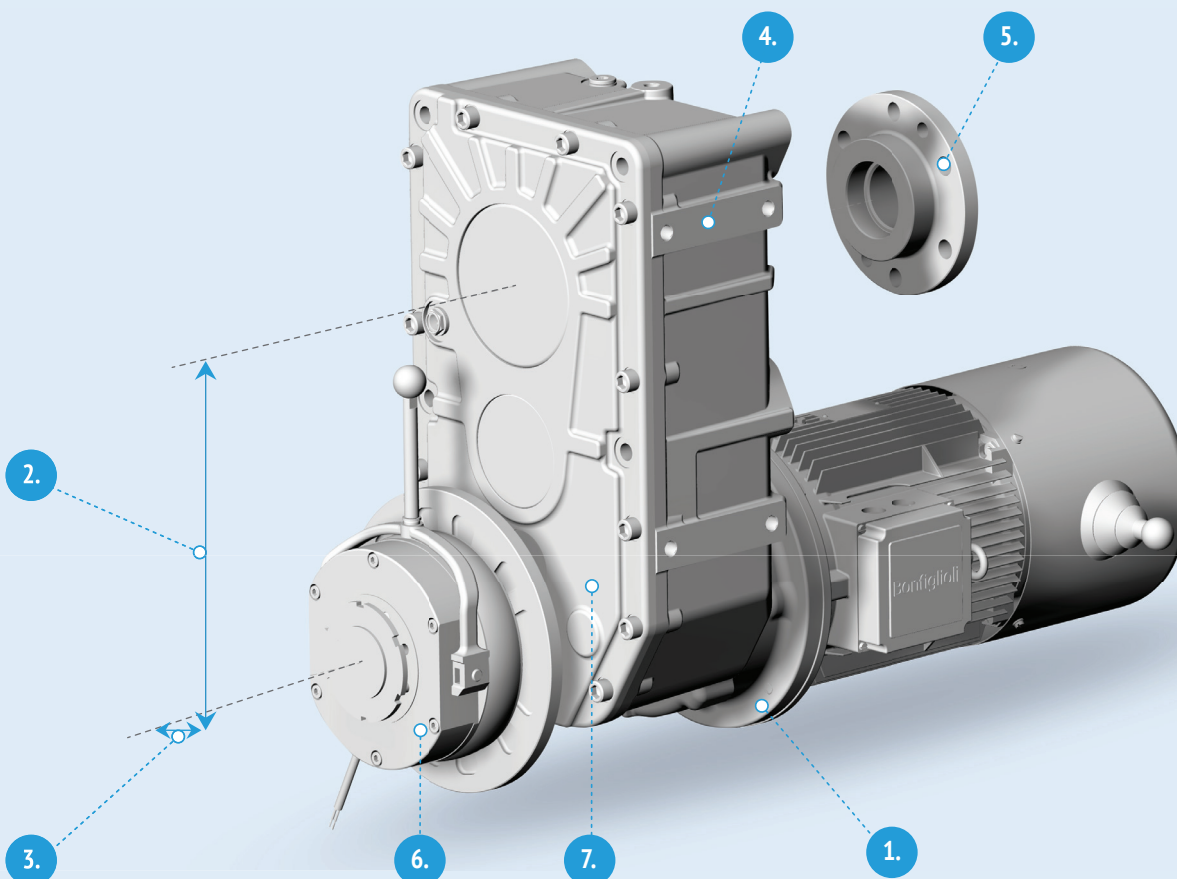


Other Features

- Gearbox mounting options with various sizes of International Standard Motor Connection (IEC)
- Optional External Brake Solution is for additional safety of the system

HF Series - Hoist Drive Units

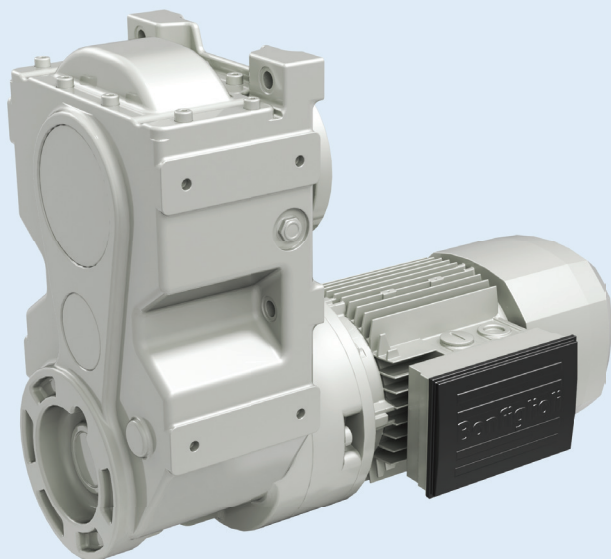
Technical Features



- 1. Input options:** Range of standard IEC connection provides flexibility for installation, maintenance and service
- 2. Higher Centre distance:** Allows flexibility to select higher drum diameters to optimize and select various reeving speeds
- 3. Higher Offset distance:** Higher clearance between motor to rope, provides ease of rope reeving
- 4. Mounting option:** Additional mounting provisions allows vertical/side mounting position for single girder cranes
- 5. Output Options:** Splined shafts and WOA flange adapters permits easy assembly with Hoist drums
- 6. Brake Options:** Standard brake motor or option with external brake provides flexibility for installation and safety
- 7. Nodular SG Iron Housing:** Permits higher load carrying capacity and higher service factors

HF Series - Hoist Drive Units

HF40



HF40

Product Information

Lifting Capacity	: Upto 4 Tons
Lifting Speeds	: 2.0 to 6.0 m/min
Mechanism Classes	: M5 to M7*
Rope Reeving (Falls)	: 4/1*
Drum Diameters	: 140 to 200 mm*
Possible Motor Frames	: IEC 90 to IEC 112, S1 Duty*

*Other options can be provided based on requirements

Technical Information

3.2 TONNE, 4/1 FALL WITH 4 POLE, 50 HZ, S1 DUTY MOTOR

DRUM DIAMETER- 140 mm

Motor Power (kW)	Lifting Speed [Vh] (m/min)	Gearbox Output Speed (rpm)	Gearbox Ratio [i]	Gearbox Torque calculated [M2] (Nm)	ISO Class	Motor Frame Size
1.5	2.0	18.4	78.08	730	M7	IEC 90
1.5	2.4	22.3	64.71	605	M7	IEC 90
2.2	3.2	28.7	50.25	689	M7	IEC 100
3.0	4.2	37.9	38.00	711	M7	IEC 100

DRUM DIAMETER- 170 mm

Motor Power (kW)	Lifting Speed [Vh] (m/min)	Gearbox Output Speed (rpm)	Gearbox Ratio [i]	Gearbox Torque calculated [M2] (Nm)	ISO Class	Motor Frame Size
1.5	2.5	18.4	78.08	730	M7	IEC 90
2.2	3.0	22.3	64.71	888	M7	IEC 100
3.0	3.8	28.7	50.25	940	M7	IEC 100
3.0	5.1	37.9	38.00	711	M7	IEC 100

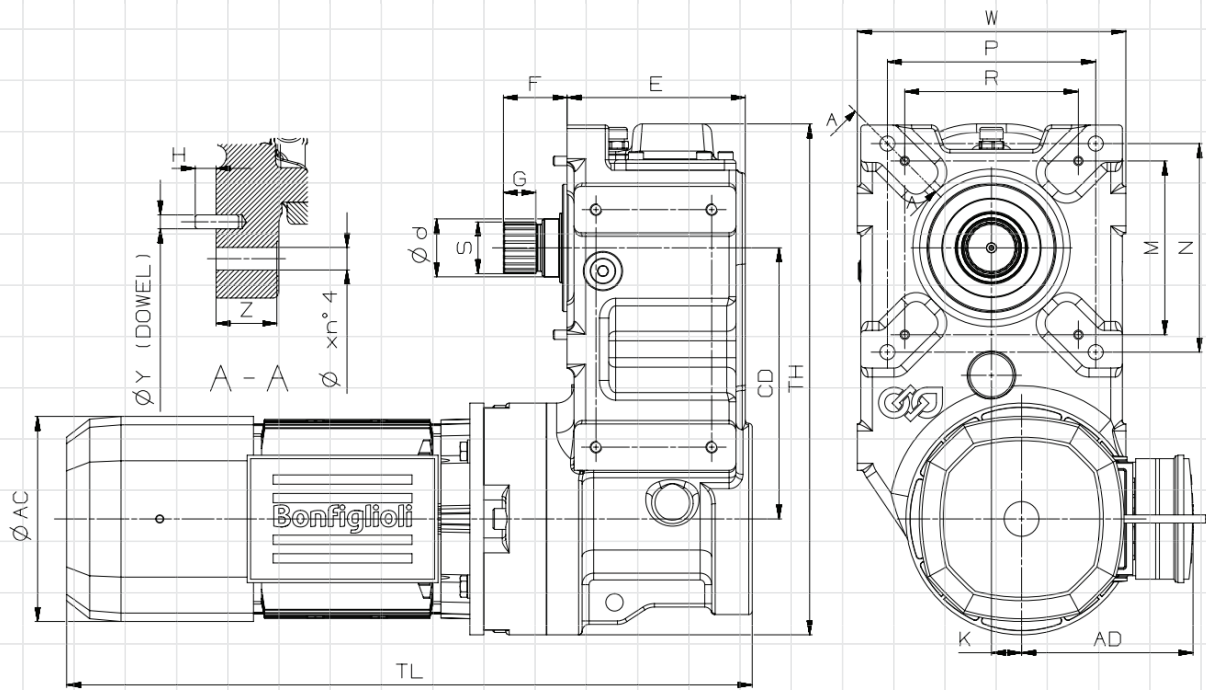
DRUM DIAMETER- 200 mm

Motor Power (kW)	Lifting Speed [Vh] (m/min)	Gearbox Output Speed (rpm)	Gearbox Ratio [i]	Gearbox Torque calculated [M2] (Nm)	ISO Class	Motor Frame Size
2.2	2.9	18.4	78.08	1071	M6	IEC 100
2.2	3.5	22.3	64.71	888	M7	IEC 100
3.0	4.5	28.7	50.25	940	M7	IEC 100
4.0	6.0	37.9	38.00	948	M7	IEC 112

HF Series - Hoist Drive Units

HF40

DIMENSIONS (Standard Version)

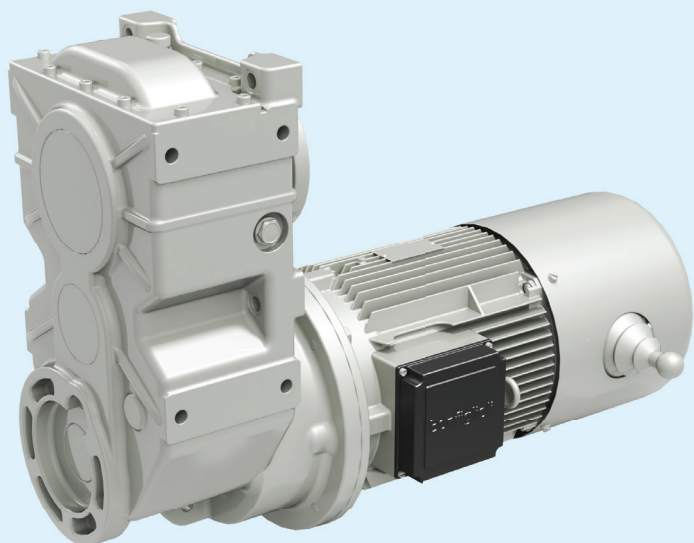


MODEL	CD	K	E	F	TL	TH	W	AD	AC	S	R&M	P&N	d	G	X	Y	Z	H
HF40 - P90	234	26	154	55	619/ 593	441	232	121/ 146	198/ 176	W45 x 2 x 21 x 8f	150	180	50	28	13	8 (N°4)	35	12
HF40 - P100	234	26	154	55	702/ 656	466	232	185/ 170	222/ 219	W45 x 2 x 21 x 8f	150	180	50	28	13	8 (N°4)	35	12

NOTE: For more details, Bonfiglioli will share the installation drawings

HF Series - Hoist Drive Units

HF70



HF70

Product Information

Lifting Capacity	: Upto 7 Tons
Lifting Speeds	: 2.0 to 7.0 m/min
Mechanism Classes	: M3 to M7*
Rope Reeving (Falls)	: 4/1*
Drum Diameters	: 170 to 220 mm*
Possible Motor Frames	: IEC 100 to IEC 132, S1 Duty*

*Other options can be provided based on requirements

Technical Information

6.8 TONNE, 4/1 FALL WITH 4 POLE, 50 HZ, S1 DUTY MOTOR

DRUM DIAMETER - 170 mm

Motor Power (kW)	Lifting Speed [Vh] (m/min)	Gearbox Output Speed (rpm)	Gearbox Ratio [i]	Gearbox Torque calculated [M2] (Nm)	ISO Class	Motor Frame Size
4	2.5	18.8	76.80	1915	M7	IEC 112
5.5	3.3	24.5	58.81	2017	M6	IEC 132
5.5	4.3	32.3	44.55	1527	M7	IEC 132
7.5	5.4	40.7	35.35	1653	M7	IEC 132

DRUM DIAMETER- 200 mm

Motor Power (kW)	Lifting Speed [Vh] (m/min)	Gearbox Output Speed (rpm)	Gearbox Ratio [i]	Gearbox Torque calculated [M2] (Nm)	ISO Class	Motor Frame Size
4	2.9	18.8	76.80	1915	M7	IEC 112
5.5	3.8	24.5	58.81	2017	M6	IEC 132
7.5	5.1	32.3	44.55	2083	M5	IEC 132
9.2	6.4	40.7	35.35	2027	M5	IEC 132

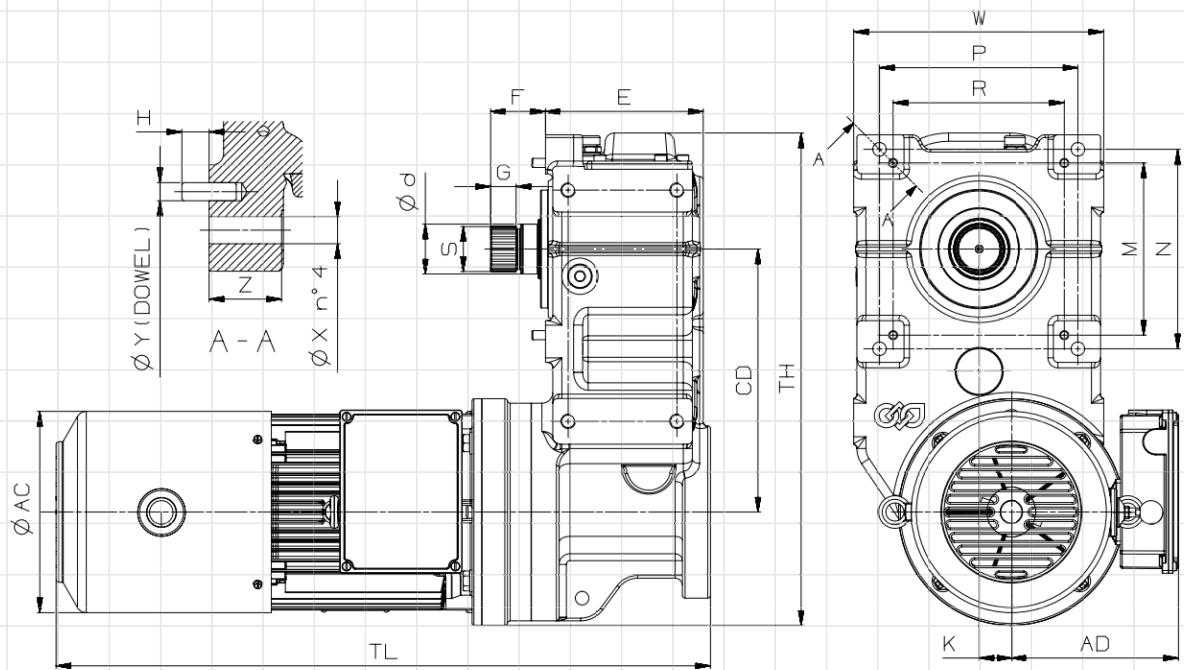
DRUM DIAMETER- 220 mm

Motor Power (kW)	Lifting Speed [Vh] (m/min)	Gearbox Output Speed (rpm)	Gearbox Ratio [i]	Gearbox Torque calculated [M2] (Nm)	ISO Class	Motor Frame Size
4	3.2	18.8	76.80	1915	M7	IEC 112
5.5	4.2	24.5	58.81	2017	M6	IEC 132
7.5	5.6	32.3	44.55	2083	M5	IEC 132
9.2	7.0	40.7	35.35	2027	M5	IEC 132

HF Series - Hoist Drive Units

HF70

DIMENSIONS (Standard Version)

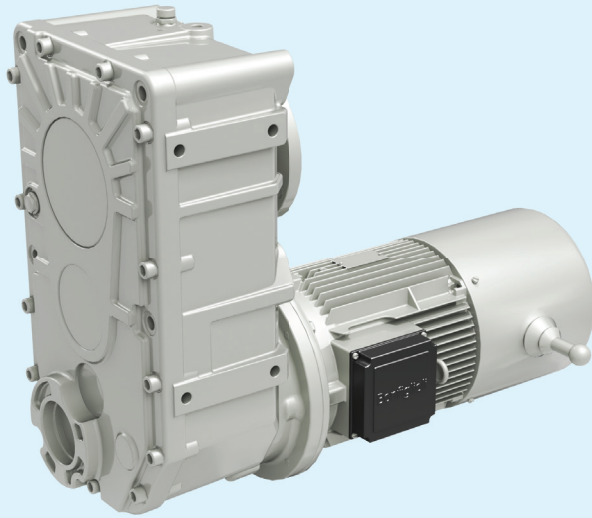


MODEL	CD	K	E	F	TL	TH	W	AD	AC	S	R&M	P&N	d	G	X	Y	Z	H
HF70 - P112	290	36	174	60.5	722/ 676	543	277	185/ 170	222/ 219	W50 x 2 x 24 x 8f	190	220	55	28	15	10 (N°4)	40	15
HF70 - P132	290	36	174	60.5	800/ 800	568	277	216/ 193	262/ 258	W50 x 2 x 24 x 8f	190	220	55	28	15	10 (N°4)	40	15

NOTE: For more details, Bonfiglioli will share the installation drawings

HF Series - Hoist Drive Units

HF125



HF125

Product Information

Lifting Capacity	: Upto 12.5 Tons
Lifting Speeds	: 2.0 to 7.0 m/min
Mechanism Classes	: M3 to M5*
Rope Reeving (Falls)	: 4/1*
Drum Diameters	: 270 to 300 mm*
Possible Motor Frames	: IEC 132 to IEC 160, S1 Duty*

*Other options can be provided based on requirements

Technical Information

12.5 TONNE, 4/1 FALL WITH 4 POLE, 50 HZ, S1 DUTY MOTOR

DRUM DIAMETER - 240 mm

Motor Power (kW)	Lifting Speed [Vh] (m/min)	Gearbox Output Speed (rpm)	Gearbox Ratio [i]	Gearbox Torque calculated [M2] (Nm)	FEM Class	Motor Frame Size
5.5	2.4	12.6	114.37	3922	M5	IEC 132 L
7.5	2.8	14.6	98.51	4606	M5	IEC 132 L
7.5	3.0	16.1	89.64	4191	M5	IEC 132 L
9.2	3.7	19.5	73.90	4238	M5	IEC 132 L
11.0	4.8	25.2	57.04	3912	M5	IEC 160 L

DRUM DIAMETER- 270 mm

Motor Power (kW)	Lifting Speed [Vh] (m/min)	Gearbox Output Speed (rpm)	Gearbox Ratio [i]	Gearbox Torque calculated [M2] (Nm)	FEM Class	Motor Frame Size
7.5	2.7	12.6	114.37	5348	M5	IEC 132 L
7.5	3.1	14.6	98.51	4606	M5	IEC 132 L
7.5	3.4	16.1	89.64	4191	M5	IEC 132 L
9.2	4.1	19.5	73.90	4238	M5	IEC 132 L
15.0	5.4	25.2	57.04	4840	M5	IEC 160 L

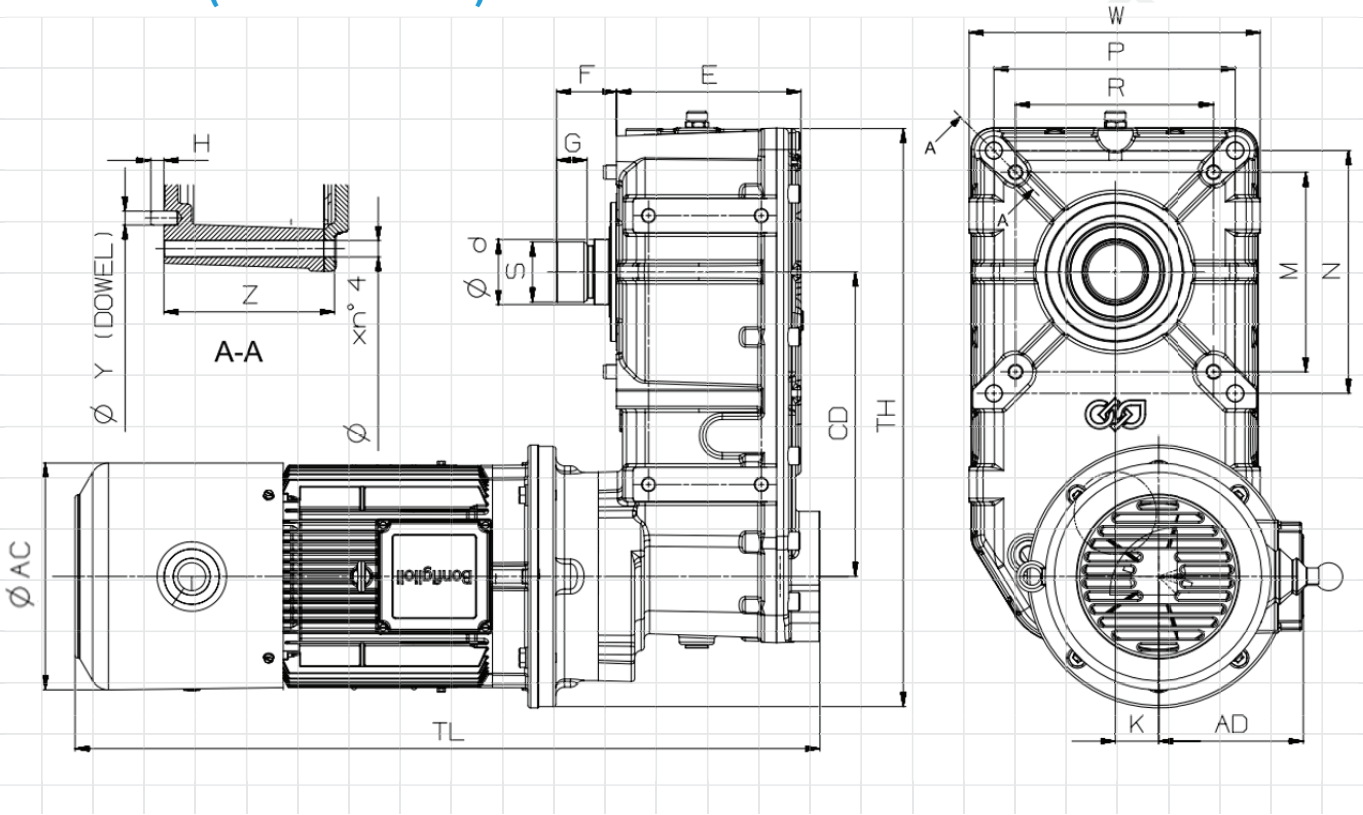
DRUM DIAMETER- 300 mm

Motor Power (kW)	Lifting Speed [Vh] (m/min)	Gearbox Output Speed (rpm)	Gearbox Ratio [i]	Gearbox Torque calculated [M2] (Nm)	FEM Class	Motor Frame Size
7.5	3.0	12.6	114.37	5348	M5	IEC 132 L
7.5	3.4	14.6	98.51	4606	M5	IEC 132 L
9.2	3.8	16.1	89.64	5141	M5	IEC 132 L
11.0	4.6	19.5	73.90	5068	M5	IEC 160 L
15.0	5.9	25.2	57.04	4840	M5	IEC 160 L

HF Series - Hoist Drive Units

HF125

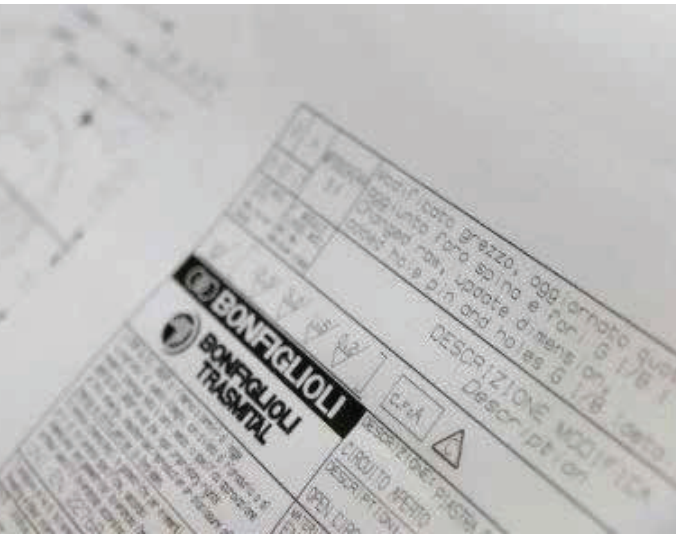
DIMENSIONS (Standard Version)



MODEL	CD	K	E	F	TL	TH	W	AD	AC	S	R&M	P&N	d	G	X	Y	Z	H
HF125 - P132	351	50	215	67	866/866	668	337	216/193	262/258	W70 x 3 x 22 x 8f	230	280	75	35	17	16 (N°4)	198.5	15
HF125 - P160	351	50	215	67	969/975	694	337	216/245	314/310	W70 x 3 x 22 x 8f	230	280	75	35	17	16 (N°4)	198.5	15

NOTE: For more details, Bonfiglioli will share the installation drawings

Research & Development



Bonfiglioli's global research and development create breakthrough solutions that integrate the most advanced mechanical, electrical and hydraulic technologies. They meet the most demanding application requirements and support our customers' growth.

More than 200 employees around the world are involved in the group's research and development.



DESIGN YOUR
SOLUTIONS



CO-
ENGINEERING

We support our customers' projects from beginning to end

At Bonfiglioli, we believe that product development relies on passion, efficient processes, and the ability to understand our customers' needs accurately. First, our team identify the customer's needs after in-depth analysis drawn from our specific application expertise.

Through dedicated calculation tools, we can simulate the transmission's capabilities and performance to reduce product development time.

The alignment phase allows us then to adapt our proposal according to key factors of performance, installation and maintenance.



The test centers at Bonfiglioli

Bonfiglioli's test laboratories support the various phases of the product life cycle, including development, certification and the production of solutions developed and manufactured in our plants around the world.

Our specialists are true partners to the R&D, technical and quality departments. They help validate each Bonfiglioli product from the smallest critical component to the overall solution.

The test centers regularly conduct additional tests to ensure the product durability and confirm the specifications declared during the official approval stage.



Global Presence



Bonfiglioli subsidiaries manage the complete local value chain in many different geographic areas, always allowing us to work as closely as possible with customers from their engineering phase through the entire product life cycle, during and after the sale.

Our highly qualified personnel strive to find the perfect custom solution to customer needs and maximize return on investment.



4000
EMPLOYEES



20
BRANCHES



15
PLANTS



550
DISTRIBUTORS



80
COUNTRIES

We Are a Global Company

Thanks to an international network of sales branches and closely interconnecting production plants, we can guarantee the same high standards of Bonfiglioli quality anywhere at any given time. Aware that our direct presence in local markets is the key to long-lasting success, our family includes 22 sales branches, 14 production plants and more than 500 distributors around the world.

Our organization is always close by, offering complete and efficient solutions and supporting our customers with dedicated services, such as co-engineering or after-sales assistance.



PLANT LOCATIONS

Chennai (Registered Office)

Bonfiglioli Transmissions Pvt Ltd
Plot No AC7-AC11
SIDCO Industrial Estate
Thirumudivakkam, Chennai 600 044
Email: salesindia.mws@bonfiglioli.com

Mannur

Bonfiglioli Transmissions Pvt Ltd
Survey No 528/1, Porambakkam High Road
Mannur Village, Sriperambudur Taluk
Chennai 602 105, Tamil Nadu
Email: salesindia.ins@bonfiglioli.com

Pune

Bonfiglioli Transmissions Pvt Ltd
Plot No A-9/5, Phase IV, MIDC Chakan
Village Nighoje, Taluka Khed
Pune 410 501, Maharashtra
Email: salesindia.ins@bonfiglioli.com

SALES OFFICES

Ahmedabad

A-812, 8th floor, SAFAL PEGASUS
100 Feet Road, Prahlad Nagar
Satellite, Ahmedabad 300 015, Gujarat
Tel: +91 79 6450 1578

Discrete Manufacturing and Process Industries

Mobile: 90999 86150
Email: rupesh.trivedi@bonfiglioli.com
Mobility and Wind Industries
Mobile: 92275 01354
Email: vishvam.m@bonfiglioli.com

Bengaluru

"YR Towers", No 140/1,
2nd Main Road
East to NGEF Layout
Kasthuri Nagar, Bangalore 560 043, Karnataka
Mobile: 99451 92179 / 92434 64794
Email: rachakonda.subbarao@bonfiglioli.com

Chennai

Plot No AC7-AC11
SIDCO Industrial Estate, Thirumudivakkam,
Chennai 600 044, Tamil Nadu
Email: salesindia.mws@bonfiglioli.com

Mobility Industry

Mobile: 92821 12120
Email: prabhurajan.j@bonfiglioli.com

Wind Industry

Mobile: 92824 49554
Email: sreejith.jayachandran@bonfiglioli.com

Discrete Manufacturing and Process Industries

112, G-2, Eldorado Building
Nungambakkam High Road
Nungambakkam, Chennai 600 034, Tamil Nadu
Mobile: 92824 01131 / 99403 33361
Email: amit.sadachar@bonfiglioli.com

Coimbatore

702, First Floor, Esteem Complex
Avinashi Road, Coimbatore 641 018, Tamil Nadu
Tel: +91 42 2222 3376
Mobile: 92444 33855 / 99620 14865
Email: gowrishankar.palanisamy@bonfiglioli.com

Indore

Mobile: 92292 11423
Email: prashant.lanjewar@bonfiglioli.com

Kolkata

31, Shakespeare Sarani, Jasmine Tower, 2nd Floor
Unit No 208, Kolkata 700 017, West Bengal
Mobile: 98311 71134
Email: sourav.dasgupta@bonfiglioli.com

Mumbai

302, Ashar Millenia, Next to Vijay Sales
Ghodbunder Road, Kapurbawdi
Thane (W) 400 607, Maharashtra
Tel: +91 22 2589 3547
Mobile: 86910 08460
Email: umesh.charate@bonfiglioli.com

Nagpur

201, Shriyash Heights, 95, East High Court Road
Ramdaspath, Nagpur 440 010, Maharashtra
Tel: +91 712 664 5879
Mobile: 92253 97675
Email: prashant.lanjewar@bonfiglioli.com

New Delhi

703, Akashdeep Building
26-A, Barakhamba Road, New Delhi 110 001
Discrete Manufacturing and Process Industries
Mobile: 99538 11321 / 78248 50083
Email: sameer.khurana@bonfiglioli.com
Mobility and Wind Industries
Mobile: 78248 89208
Email: harshit.r@bonfiglioli.com

Pune

Office No 206, 2nd Floor, Amar Neptune
Off Main Baner Road, Pune 411 045
Tel: +91 20 2729 2054
Mobility and Wind Industries
Mobile: 78248 85525
Email: suhas.muchandi@bonfiglioli.com or
Discrete Manufacturing and Process Industries
Office No 1, Business Venue, Sanghavi Nagar
DP Road, Aundh, Pune 411 007, Maharashtra
Tel: +91 20 2588 1985
Mobile: 78248 08762
Email: madhusudhana.r@bonfiglioli.com

Secunderabad

Flat No 712, 7th Floor
Swapnalok Complex, 92/93, S D Road
Secunderabad 500 003, Telangana
Tel: +91 40 6456 6254
Mobile No: 83099 30184 / 92461 89583
Email: ragavendran.srinivasan@bonfiglioli.com

National dial-in number:



Service Toll Free numbers

1800-274-3399

Discrete Manufacturing and Process Industries

1800-120-9177

Mobility and Wind Industries



www.bonfiglioli.com |

Bonfiglioli-India |





We have a relentless commitment to excellence, innovation & sustainability. Our team creates, distributes and services world-class power transmission & drive solutions to keep the world in motion.

Bonfiglioli Transmissions Private Limited

Survey No. 528/1, Perambakkam High Road
Mannur Village, Sriperumbudur Taluk
Chennai - 602 105

